

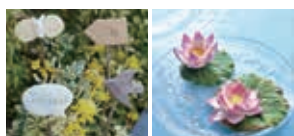
8 模塑 MODELLING



日本耐水輕量黏土(白) Water Resistant Air Dry Clay White

M237-11 bag • 100g

●輕黏土帶膠性，可防滴水，它提供光滑細膩的質地。
Lightweight clay with plasticity, is treated against drops of water. It provides a smooth & fine texture like Hearty clay.



日本Hard Calmo黏土(白) Padico Hard Calmo White

M238-11 bag • 180g

●完全乾透後可用砂紙打磨，乾燥後又輕又硬。
It has the characteristic of being able to be filed down with sandpaper. After drying completely, it can be filed with sandpaper.



My Clay 輕黏土 My Clay (Light Weight Clay)

M256-11 bag • 50g

●韓國原產地，柔軟不黏手，環保、安全、無毒，可混色使用，提供十五種顏色選擇：白、紅、黃、藍、綠、啡、黑、桃、橙、紫、螢光黃、螢光橙、螢光粉紅、螢光綠、螢光紫。錫膜包裝。Ideal for all creative ornaments and artworks. Good for decorating photo frame and book and your wild imagination.
15 colors: white, red, yellow, blue, green, brown, black, peach, orange, violet, fluro yellow, fluro orange, fluro pink, fluro green, fluro purple.

用家一致好評！



01	02	03	04	05
White	Red	Yellow	Blue	Green
06	07	08	09	10
Brown	Black	Peach	Orange	Violet
11	12	13	14	15
Fluro Yellow	Fluro Orange	Fluro Pink	Fluro Green	Fluro Purple

仿真奶油土 Cream Glue

M281-21 color/white • 50ml

M281-22 white • 100ml

●水性環保，潔白柔滑，可塑性強，無毒無腐蝕，可用水清洗，半小時內表面開始凝固，呈塑膠狀防水富彈性，不變形，不褪色。可用於製作仿真蛋糕、食物模型、相框裝飾、手工DIY創作等。
Color: white, skin, yellow, pink & brown. Packing with a plastic nozzle.



*每支幼油土送塑膠花咀1個

彩色奶油黏土 Cream Clay

M253-11 color/white • 27g

M253-21 white • 90g

●新改良配方，比先前更堅固耐用。顏色：白、淺黃、淺綠、淺紫、啡、淺粉紅、淺藍。

Color: white, yellow, light green, purple, brown, pink, light blue.



第二代新配方：
定型後更堅固耐用



仿真奶油土「精選創作包」 Cream Clay Creative Kit

M254-11 set

●粉紅、黃色、藍色、紫色、白色，五色系列，每袋提供髮夾、咭紙、15g仿真奶油土及花、小飾物多件。



擴香石膏製作套裝

Aroma Stone Kit

M115-21 A • set

●擴香石是一種新興的香薰散發產品，它不需加熱也不會冒煙，製作方式相當簡單安全，在家就能自己動手DIY，您只需要將石膏粉與水混合，倒入不同模具，喜歡的話也可為擴香石調色，或加乾花襯托，製作出自己喜歡的作品。



套裝內容

石膏粉 500g 1包 • 量杯 250ml 1個 • 膠攪拌匙 1個 • 長鐵匙 1把 • 畫筆(3支) 1套 • 小絲帶 1條 • 刮刀 1把 • 香薰精油 10ml 1支 • 多頭心形模具 1個 • 小熊模具 1個 • 木馬模具 1個 • 打磨沙紙 1張 • 強力膠水 1支 • 製作說明 1張

韓國擴香石膏粉

Natural Plaster for Aroma Stone

M115-12 bag • 1kg



擴香石膏粉

Aroma Stone Plaster

M115-11 bag • 500g

●擴香石粉，極幼2000目高密度，超細白粉末，每包500g，適合各類精緻倒模作品。



黏土蛋糕創作 工具及配件

鋼花刀模

Metallic Clay Cutter Set

M276-21 set of 12 pcs

●每套12個刀模。



A 動物形 Animals



B 鳥形 Birds



C 心/星/圓/花形

忌廉土雕塑棒

Clay Cake Tool Set

M267-11 set

●一套8件，雙頭設計，共16個塑形。

Sets of 8 durable plastic tools that featuring 16 creative edges.



忌廉土花咀

Clay Cake Nozzles

M255-11 A

M255-21 B

●A款每套六款花咀。B款每套六款花咀連忌廉擠袋。



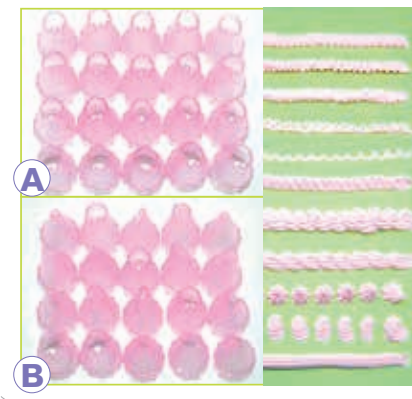
塑膠忌廉土花咀

Plastic Nozzles

M255-51 A • 同款 20 pcs

M255-52 B • 混款 20 pcs

●塑膠花咀。A款為指定單款花咀20個。B款為20個混款花咀。



工具介紹 TOOLS



M264-21 仿真水 200g
Imitational Water

仿真水的使用方法：

A、B兩劑以重量3:1混合，亦即3份A加1份B混合。攪拌後即可倒入製作的器皿內，靜置約12小時左右即可硬化。



M263-21 仿真雪粉 100g
Snow Powder



M262-21 彩色糖針 20g
Sugar Strands



M265-11 雪糕粉
Ice Cream Powder 120g



M262-11 仿真砂糖
Imitate Sugar 100g



M263-11 仿真迷你冰粒
Imitate Ice Pieces 100g #91914



M128-61 黏土專用光油
Clay Sealer(Super Gloss) 100ml

輕黏土 LIGHTWEIGHT CLAY

彩色安兒輕黏土 ClayDoll Light Weight Clay

- M211-21 A • set • 6 colors x 20g
M211-22 B • set • 12 colors x 25g
M211-23 C • set • 24 colors x 25g
M211-31 D • each • 400g *

● 每色均以小膠盒密封，內附詳細說明書，適合多次使用，柔韌輕盈，色彩豐富悅目，作品乾後不變形，富彈性。



*表示400g單色桶裝可供選擇的顏色

*01	*02	*03	*04	*05	21	07	*08
純白色	皮膚色	中黃色	金黃色	橘黃色	奶油色	淺粉色	深粉色
09	10	*11	12	*14	*16	*17	*18
洋紅色	玫紅色	大紅色	深紅色	草綠色	軍綠色	天藍色	寶藍色
28	29	*31	32	*33	34	35	*36
碧綠色	碧藍色	淺紫色	深紫色	咖啡色	棕褐色	淺灰色	純黑色

小老虎彩色輕黏土 (6色新裝) Color Light Weight Clay

- M245-21 A / B / C • set • 6 colors x 10g
M245-22 A + B + C • 18 colors x 10g
M245-12 D • set • 10 colors • 100g

● 最新配方，黏土更有彈性。安全、無毒、環保，柔軟不黏手，不必擔心弄髒衣服，顏色變換無窮，互相混色使用。Ideal for making a bouncing ball, decorating your photo frame, book and your wild imagination.



AMOS 超輕黏土 AMOS iClay Light Weight Clay

- M109-11 A • each • 50g
M109-21 B • each • 400g



● 輕黏土像棉花糖般輕軟，有彈性，質感細緻。Soft and light-weight, even after drying. Nice color mixing and available in many colors. No crack after drying. Air-dry. Bright color.



小豬嘜彩色超輕量黏土 Super Lightweight Modelling Clay (Color)

- M236-11 45g • white/color
M236-21 450g • white

● 超輕量黏土，提供白、杏、鮮黃、橙及粉紅五種顏色，細袋裝以錫袋密封包裝，大盒450g以膠盒包裝，質地柔軟，富彈性，不易破裂，自然風乾，可利用膠水把黏土黏合在一起，安全無毒。Choose from five colors: white, cream, yellow, orange & pink.



01	02	03	04	05
White	Cream	Yellow	Orange	Pink

德國輕質黏土

STAETTLER FIMO Air Light Modelling Clay (White)

- M198-11 250 g
M198-21 125 g

● 是一種質地柔軟，輕質的模型素材，可製成玩具車、大人形和面具。容易處理和清潔易用，揉捏作品更加細緻。Ready to use from package-soft and light, specially suitable for making mobiles, large figures and masks. It is clean to work with and picks up details beautifully. White in color.



夜光輕黏土

Glow-In-The-Dark Light Weight Clay

- M212-11 bag • 70g

● 日本製造柔軟輕質黏土，提供綠、藍、紫色，令你製作不一樣的擺設作品。



美芯樹脂黏土

Resin Clay

M207-21 bag • 300g • 6 colors - basic

M207-22 bag • 300g • 6 colors - pastel

M207-31 bag • 600g • 12 colors set

●是目前最新最安全，完全取代所有傳統黏土，模塑範圍很廣。每包分為主色及粉色系列，6色包裝。

樹脂黏土的特性：

- 自然風乾，容易變硬。軟硬適中，不會黏手。
- 柔軟細緻，延伸性強，方便製作。
- 顏色種類繁多，色彩鮮艷，不會褪色。
- 仿陶瓷的質感，適合做小吊飾。
- 不用時用保鮮膜包好，放在密封盒內，以便保存。
- 若做大作品必須加蕊材，否則容易變形。



Pastel color

Basic color

Hearty 超輕黏土

Hearty Super Light Weight Modelling Clay

M239-11 pack • 50g • color

M239-12 pack • 40g • white

M239-21 pack • 180g • white

●多種顏色可供選擇，獨立包裝，質地柔軟，清潔容易。Hearty doesn't stain and becomes very hard once dry.

50g Color:



40g White

180g White

Hearty Soft 超輕黏土

Hearty Soft Extra Pilability / Feather Texture Modelling Clay

M239-22 pack • 180g

●質地較柔韌，適合做花瓣等需較挺身作品。

Hearty Soft is designed as an advanced formula for professional use with elasticity and strength. As Hearty, it feels nice and velvety texture, but it is softer than regular Hearty Clay. It tends to be a touch sticky when stretched or pulled apart. It can be pressed thinly and supple on palm, like a rose petal. The cured piece will not break. It can be sanded and finished with most any paint or decorating medium. Perfect for making flowers, fake sweets, miniature food, accessories, and other craft projects.



高級樹脂黏土

Grace Resin Clay

M210-31 pack • 200g

●日本高級樹脂黏土，每包兩條獨立包裝，是製作麵粉花常用材料，質地柔軟，透明度極高，風乾後可保持彈力，不易碎裂，作品更富真實感。

Features include easier workability, no crumbling, strength and durability.



玉瓷黏土

Pearl Clay

M251-21 200g

●透明性佳，延伸性好，雕塑性強，易成型，作品極精緻，乾後呈現珍珠色光澤，可用油彩改變其色彩，完成後加上厚塗光油，效果更佳。



工具介紹 TOOLS

A Sharp/ No.10043

B Straight/ No.10042

細工棒(金屬製)
Metal Craft Rod

M216-11 A
M216-21 B



1446

圓形鍋棒(4支裝)
Dual-end Round Tool (4 pcs)
M217-21 set



專用剪刀
V. Road Scissors
M218-11 each



1451

黏土塑形棒(3支裝)
Modelling Tools (3 pcs)
M214-11 set



壓機
Clay Press
M219-21 each



893

鬱金香花模
Tulip Petal Mould (3 pcs)
M221-11 set



1053

7.5cm long

繡球葉模
Hydrangea Leaf Mould
M221-42 each



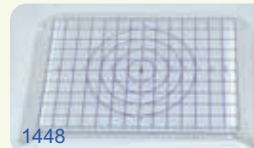
879.1

士多啤梨葉模
Strawberry Leaf Mould
M221-31 each



881

玫瑰花葉模
Rose Leaf Mould
M221-41 set



1448

壓板
Mini Press
M219-12 each

紙黏土 PAPER CLAY

價格優惠，個人包裝，針對一次，不會浪費，更加環保，適合學校使用，品質有保證。



小白貓紙黏土 Modelling Paper Clay

M162-31 bag • 175 g

M162-41 bag • 500 g

M162-51 bag • 1 kg

更柔軟！

●韓國原產地，此產品是紙質纖維豐富，潔白富彈性、延伸性強，不易龜裂，最適合小學生或初學者使用，捏造各類幼細主題，也能得心應手。另也適合作立體雕塑，鋪貼廢樽等環保作品，乾後異常堅固，得以長期保存。

Air-hardening paper clay that is white and pliable. It can be moulded and shaped while it's still moist. Create dolls, ornaments, sculptures and more. Ideal for schools because it air hardens. For a wide range of skill levels.



太陽陶土紙黏土 Terra-Cotta Paper Clay

M164-21 bag • 200 g

●韓國原產地，風格獨特，包裝精美，存放時間較長，作品不需上色，洋溢鄉土風味，堅固耐用，亦可上色改變，各適其適。



韓國紙黏土 Venus Paper Clay

M229-11 bag • 500 g

●500克錫紙包裝，可長久保存，質地柔軟易控制，安全無毒，價格優惠。
500 grams individual packed. Airhardening, nontoxic, inexpensive.



北極熊紙黏土 Polar Bear Paper Clay

M165-11 bag • 280 g

●每包黏土均有膠盤承托，不易變型，是學校常用的教材，黏土潔白易乾，適合初學者及大量使用，安全無毒。
This nontoxic, economy priced modeling material has been especially designed for classroom use.



塘鵝紙黏土 White Clay Paper Clay

M105-11 bag • 1 kg

M105-21 bag • 500g

●學校常用教材，適合初學者及大量使用，乾燥後收縮較小，可鋪貼其它芯材，一併使用。

Popular educational material ideal for junior users. It will reduce in size slightly when dry. It can be adhered to any surface.



LaDoll 石塑黏土 LaDoll Stone Modeling Clay

M210-21 bag • LaDoll•500g

●獨立包裝，特別耐用，適用於塑造公仔、傢具及人物等造型。

Quality clay for making details. Molded, sculpted, stamped or carved, La Doll is the perfect air-dried clay for fine detail work, it contains highly refined pumice, talc and small amounts of paper pulp and binders, resulting in an extremely pliable clay that can be worked with indefinitely by keeping the clay moist.

Adheres to any core material (Wire Mesh, Rigid Wrap, Paper, Glass, Plastic, Wood, and Styrofoam). Air dries with minimal shrinkage. Once dry, it can be carved, drilled, or sanded and get a satin finish. All paints and varnish are also accepted.



Premix輕量石塑黏土 Premix Stone Modeling Clay

M210-22 bag • Premix•400g

●獨立包裝，黏土介乎La Doll與Premier之間，超輕、柔韌，容易雕刻和打磨平整，適合製成中空粘土作品。
Premix is a combination Premier and La Doll clays mixed to the best consistency for a wonderful new air dry clay. With an extremely pliability from the feature of La Doll and ultra-lightweight from the one of Premier, it is easily carved and polished smooth. With the strength,



it can be made a hollow clay object. All paints and varnish are also accepted. It is perfect for ball jointed dolls, figure dolls, miniature house, and diorama.

Premier高級輕量石塑黏土 Premier Stone Modeling Clay

M210-23 bag • Premier•300g

●獨立包裝，在La Doll系列中最高級的配方。黏土比La Doll更精細，超輕、柔韌、明亮的白色面，可加入顏料搓捏混色。

Premier is the most advanced formula in La Doll Series. Like La Doll, but with a finer body, allowing for greater detail, exceptional strength, ultra-lightweight pieces and bright white finish. Because of the white clay, it can be kneaded with colors and make your original colors. All paints and varnish are also acceptable. Can be blended with La doll for increased strength. No crumbling, no-stick.



麵塑彩泥

Chinese Air Dry Clay

M112-31 set • 9 colors

●文化特色傳承的中國傳統工藝，採用特高筋麵粉，精磨糯米粉而成，麵泥細膩，不易裂開，造型塑造能力高，未乾之前可反覆捏塑，每色30g，獨立真空包裝，安全衛生。

全套9色；紅、黃、紫、啡、黑、白、綠、藍、肉色



DAS石質黏土

DAS Stone Effect Modelling Clay

M107-31 1 kg

●歐洲原產地出產，作品呈石頭質感。The timeless air-drying modeling clay in a new colour with a stone effect. Easy to model, perfect to create statues, sculptures, bas-reliefs, it offers countless ways of modeling with a natural final effect, coarse, porous and without cracks.



DAS免燒黏土(白/陶色)

DAS Modelling Clay (White / Terracotta)

M107-11 A • white • 500g

M107-21 B • terracotta • 500g

●意大利出品，封乾後容易上色，可用廣告彩或塑膠膠著色。

Made in Italy. Self hardening modelling clay (24 hours per cm). Fine and even textures that is easy to smoothen. Can be used with food, cardboard and terracotta. Poster paint and varnish can be used when decorating. Das objects are solid and strong.



雕塑硬油土

Oil Clay

M187-31 each

●純天然黏土，適合製作大中小型雕塑作品、美勞立體造型教學，製造模具及防水補洞之家居材料。1磅裝，約7"x3"。

Natural Clay. 1 pound each



日本雕塑油土

Oil Clay

M187-11 500g

●高級油土品質、黏度、密度、硬度適中，適合作雕刻，模塑造型，翻鑄倒模等練習，不會變硬及龜裂，適合各種年齡人士使用，必然樂趣無窮。

Workability is excellent.



蜜桃色黏土

Sculpt Dry Clay - Peach

M290-11 bag • 500g

●韓國產品，安全無毒，每包500g，適合製作人物及表現其膚色。

Solid & Robust without heating or firing. The wet clay pieces can easily be joined without adding glue. Can be painted and varnished after drying. Non-toxic, conforms to EN71 1-3 & ASTM D4236.



韓國自製擦膠套裝

Korean Rubber Clay

M228-11 box • 10 colors

●先將泥膠搓軟捏塑，將作品放入沸水中煲約15-20分鐘，取出待冷卻後，即成為一件唯你獨有的優質擦膠。泥膠可以混合出各種顏色。安全無毒，每盒10色膠盒包裝。

Kids will love making their favourite characters and fruits. Aftering boiling for 15-20 minutes, let it cool. It will become an unique rubber. 10 colors per box.



放入滾水或小型焗爐處理定型

是飾物！又是擦膠！
看我多有趣！



10色低溫土

Polymer Clay (10 colors)

M301-11 100g • 10 colors

●10色共100g，可塑性高的人工合成黏土，把製作好的作品放入焗爐烤焗，便可定型。色彩鮮艷，不粘手，未烤焗前可重複使用。



韓國彩色泡泡膠黏土

Korean Color Ball Clay

M252-11 bag • 50g

● 泡泡泥安全、無毒、超輕，泡泡泥的重量只有相同體積橡皮泥的一半，便於攜帶。柔軟不黏手，觸感好，在玩耍中不必擔心弄髒衣服。黏性強，捏塑成型快，定型保存容易。

Simply apply, decorate, shape, or create. Cover picture frames, create a sculpture, build unique objects.

01	02	03	04	05	06
White	Red	Yellow	Blue	Green	Brown
07	11	12	13	14	15
Black	Fluro Yellow	Fluro Orange	Fluro Pink	Fluro Green	Fluro Purple



B&W 彩色泡泡膠黏土

B&W Color Ball Clay

M286-11 pack • 12 col. • 185g

● 泡泡泥安全、無毒、超輕，泡泡泥的重量只有相同體積橡皮泥的一半，便於攜帶。柔軟不黏手，觸感好，在玩耍中不必擔心弄髒衣服。黏性強，捏塑成型快，定型保存容易。

Simply apply, decorate, shape, or create. Cover picture frames, create a sculpture, build unique objects.



德國FIMO軟低溫泥

FIMO Oven Modelling Clay

M173-11 each • 57g

M173-12 kit • 6 pcs x 57g • single color

● 模型原料，用法容易，顏色多，可混合不同顏色，只須放入130度之焗爐內烘焗數分鐘，便可定型，冷卻後可塗上光油，增加光亮及保護性，定型後的作品可以切割，銼滑，容易清潔，不會收縮。

A versatile modelling material which hardens in the ovens. Knead colors together for different shades. After modelling, simply place the object on a preheated oven set at 130°C for 10-20 minutes. Baked FIMO can be added to and baked again. Hardened FIMO can be carved, sawed, filed, cut, and painted. It's watertight and washable.



0	10	16	42	24	26	22	61
0	10	16	42	24	26	22	61
White	Lemon	Sunflower	Tangerine	Indian Red	Cherry Red	Raspberry	Purple
62	63	35	33	37	39	56	53
62	63	35	33	37	39	56	53
Lavender	Plum	Windsor Blue	Brilliant Blue	Pacific Blue	Peppermint	Emerald	Tropical Green
50	43	70	76	7	75	80	9
50	43	70	76	7	75	80	9
Apple Green	Flesh	Sahara	Cognac	Caramel	Chocolate	Dolphin Grey	Black

泥膠及軟膠泥工具

MODELLING TOOLS

幼兒膠模套裝A

Moulds Set A

M205-21 set

● 每套形狀多變，創作更富樂趣。
approx. 4cm(H)



幼兒膠模套裝B

Moulds Set B

M205-22 set

● 每套形狀多變，另附送小型工具，創作更富樂趣。
approx. 5cm(H)



幼兒膠模套裝C

Moulds Set C

M205-23 set

● 每套10個膠模。
approx. 3.5x1.5cm(H)



小泥槍 (軟泥團用)

Mini Extruder (For Dough)

M185-11 set • 5 pcs

● 每套5件泥槍。
Available in 5 different funny holes.



泥膠及軟膠泥創作 PLASTIC CLAY & SOFT DOUGH

本公司採用之泥膠產品，均有歐洲安全無毒標準。軟膠泥柔軟、不脫色、不黏手，幼兒最宜採用。
Products bearing the CE seal are identified by manufacturer through European Toy Safety Standard. Suitable for use by children. Soft dough is a soft re-usable modelling material particularly suitable for young children.

新色泥膠

Economical Plastic Clay

M200-11 pack • 6 colors

M200-21 pack • 8 colors

M200-51 pack • 12 colors

●備6色、8色及12色可供選擇，適合個人用。
6, 8 & 12 colors packages are available. Suitable for personal use.



24色泥膠

Modelling Clay

M213-11 pack • 24 colors

●條裝泥膠，每盒24色，質地柔軟，安全無毒，適合學校小組使用。

Suitable for groups. Packaged in 24 colors.

顏色鮮艷！



馬卡龍色泥膠

Macaron Plastic Clay

M200-61 box • 8 colors

M200-62 box • 12 colors

●備8色及12色可供選擇，適合個人用。
8 & 12 colors packages are available. Suitable for personal use.



奇趣浮水6色泥膠

Aqua Modelling Clay

M110-11 A • 6 basic colors

M110-21 B • 6 neon colors

●不脫色，優質無毒，作品完成後可浮在水面上，令作品激發更多構思，非常有趣，提供多色選擇，適合各種年齡創作。Weight: 300g.

Light weight and smooth. Never dried. Never hardens. Can be floated on water. More fun and enhance kids' imagination.



新色條裝泥膠

Plastic Clay 250g

M200-41 each • 250g

●250g單色大件裝，適合小組分配使用，十三種顏色可供選擇。



01 Black	04 Violet	05 Blue	06 Bright Blue	07 Teal
09 Bright Green	10 Green Neon	12 Yellow	17 Orange	18 Brown
20 Red	22 Pink	24 White		

彩色幼砂黏土

Sand Clay

M294-11 500g

M294-12 1000g

●小朋友最喜愛堆沙的遊戲，質感似黏土及砂粒混合調配，顏色鮮艷，使用時不黏手，可配合模具使用，更為有趣的是，物料不會乾涸，容易清潔，給孩子鍛鍊手部肌肉，加強觸感及啟發思考，可循環再用。用膠桶盛載內送模具，是全新天然環保的教材。



晨光麵粉泥

M&G Play Dough

M130-11 A • bucket • 9 colors

M130-21 B • bucket • 24 colors

●有9色裝及24色裝兩種選擇，每個顏色泥團均獨立包裝，保持衛生，顏色悅目，適合兒童塑形創作，附送模具或工具。

Each bucket comes with tools.



幼兒軟泥團

Play Dough

M246-21 A • each

M246-11 B • each

●有七色裝及單色裝兩種選擇，用手挽小桶包裝，內附膠模一個。Available in 7-color set & single color. Packed in a bucket and a plastic mold included.



7-color Set

*單色裝隨機出貨，不能自選顏色

石膏及紙泥粉 PLASTER & PAPIER MACHE

模型石膏布
Plaster Wrap

M132-11 4" x 15' roll

M132-31 4" x 82' roll

●可做面膜、面具、飾物、模型等富想像力的作品，只需用暖水將石膏布浸軟，然後固定其形狀2-3分鐘，乾後即會變硬，定形後可塗繪任何顏料，安全無毒，不會損害皮膚，可用皂水清洗，也可用微波爐縮短乾燥時間。

A plaster bandage that when made wet, will conform to any shape. Simple to use. Just cut, wet, shape and let dry. Microwavable and will accept acrylics and all types of paints.

Non-toxic, cleans with soap and water.

雪白紙泥粉
Paper Mache

M108-31 bag • 200g

●經漂白處理，顏色雪白，富有質感，自然風乾，可用塑膠彩及廣告彩上色。

Air hardening. Non-toxic. Easy to play. Can be painted by acrylic or poster colors.

鑄造模粉
Mix-A-Mold

M121-11 pack • 450g

●安全無毒的材料，用於模造立體作品，原材料是天然植物研磨而成，只需用水稀釋即成製模漿，凝固時間只需數分鐘，可複製多類材料，過程簡便，不傷皮膚，適合學生使用。

It is non-toxic. Mix-A-Mold makes it easier than ever before to make perfect reproductions of 3-dimensional objects. Supplied in powder form, it mixed with water and the mold is ready in a few minutes.

專用模型石膏粉
B&W Model Plaster

M121-21 each • 1000g

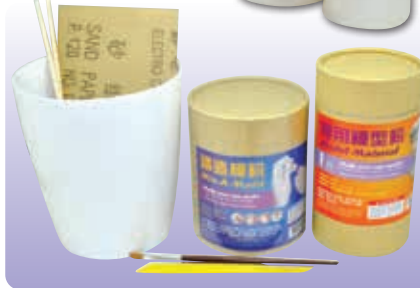
●高強石膏粉，硬度更好，仿似樹脂的硬度，適合高要求的製作。約20分鐘凝固成型，表面白色，容易上色，每瓶約1000g，特價發售。

Hard & white gypsum plaster. Suitable for making sculpture models, construction model & art materials. Fine & smooth texture.

鑄模模型套裝
Molding and Caeting Set

M121-31 set

●套裝內附鑄造模粉450g、專用模型石膏粉1000g、砂紙1張、木筷子1對、畫筆1支、泥批1支及鑄模容器1個。

B&W金/銀箔片
Gold / Silver Leaves

M283-11 25 leaves • 15x15cm

●令廢樽變身成寶盒，創作更多樣化，可用於不同表面，金、銀兩種顏色可供選擇。Impressive surface effects. Adheres to many different surface. Choose from gold and silver.

浮雕造形粉
Relief Sculpture Material

M300-11 500g

M300-21 2.5 kg

●易塑形硬度高，可打磨不開裂。1:3 開水即成泥狀，可作批泥，適合作牆畫，乾後堅固容易上色，500克膠袋裝及膠桶裝。

專業石膏粉
Gypsum Plaster

M116-11 1 lb.

M116-21 25 kg

●石膏粉分1磅裝及25公斤大包裝兩種。適合作手工藝用途，不易裂開，定型後表面光滑。

開水比例 -- 石膏粉1.2 : 水1
石膏粉放入水中攪拌2至3分鐘成石膏漿，即可例入模具中灌漿注模。
(石膏粉開水後請於5分鐘內使用)

1 lb pack and 25 kg pack are available.



模型支架及芯材 PLASTIC MOULD

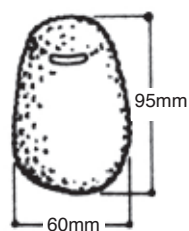
創意膠錢箱

Plastic Casting Mould

M181-11 each

●模塑物料，趣緻的膠桶形狀，底部有膠蓋，方便儲物，令作品更有實用性，配合各類黏貼，靈活地發揮。

Good plastic mould with openings.



企立及橫擺適合各種面貌，非常有趣。

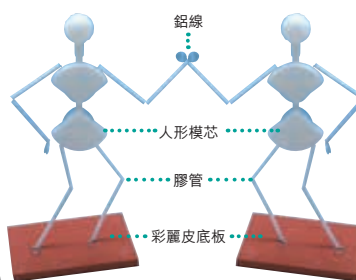
塑膠造型支架

Head / Body Plastic Armature

M180-11 set

●全套有人形模芯、膠管、鋁線、彩麗皮底板(約4.5"X3.5")，彩麗皮板方便鐵線穿過，穩定塑膠支架。讓同學充分發揮創作構思，可變成動物，人物或各種的生物動態，每套附詳細說明。

Each kit contains a head and body plastic mould, straws, wire, and a foam sheet. Prefecred by sculptors, animator and artists of all ages.



可變化人物動態及各式動物造形，創意無限。

人形芯材連膠座

Plastic Body Wired Armature

M232-11 set

●容易掘曲至人體動態，可塑造男或女人形。11"(高)x3.5"(闊)。本模型以八頭身比例設計。台灣原產地出品。

This armature is designed to enable the sculptor to build the finest foundation available. Easily bent and pliable to position.



頭像芯材連膠座

Plastic Head Wired Armature

M232-21 set

●簡單的方式將鋁線豎立在底座上，大小不同的模型像積木一樣在上方組合成支架，塑材塑上後可創作出可愛的頭像。

台灣原產地出品。



模型芯材

Plastic Moulds

M134-11 A • 100pcs • 蛋殼形 egg

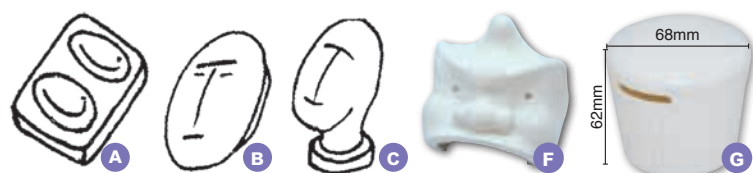
M134-21 B • each • 面具形 face mask

M134-31 C • each • 人像形 head

M247-11 F • each • 獅頭 lion head

M181-12 G • each • 蛋糕錢箱 Cake Bank

●使用芯材不單減輕模型材料的用量，另以其形態幫助塑形，增加變化，而初學者或年幼學員更能掌握立體造型要訣，常用於陶泥、紙泥粉、紙黏土、泥膠等。A-C款以吸塑製造，F-G款以硬膠製造。G款蛋糕造型的錢箱芯材，模塑物料，可配合各類小飾物及奶油土裝飾，發揮創意，製成各種蛋糕造型，完成後可作錢箱或擺設。Flexible moulds capable of casting shapes. Use clay, papier mache, paper clay or plastic clay, pop out, and decorate with paints.



膠模及模塑工具 MOULDS & MODELLING TOOLS

特色軟膠模

Silicone Moulds

M273-12 A

M273-13 B

●提供七款形狀系列選擇。

The moulds are soft and flexible which are used for a variety of mediums. The moulds can be used in so many ways, the creative possibilities are endless.



A1. 小兔
Rabbits



A2. 花朵
Flowers



A3. 鬱金香
Tulip



B1. 花葉
Flowers & Leaves



B2. 小豬
Pigs



B3. 小動物
Small Animals



B4. 昆蟲
Insects

磨砂膠模

Plastic Moulds

M274-21 B • each

M274-11 C • each

●提供多款形狀系列選擇。



B1. 菊花(6格)
Chrysanthemum (6's)
Size: 7"x4.5"



B3. 小豬(2格)
Piggy (2's)
Size: 4.5"x4"



B4. 七角星(6格)
7-pointed star(6's)
Size: 7"x5"



B5. 心-I love you(6格)
I love you (6's)
Size: 7"x5"



B6. 小花(6格)
Flower (6's)
Size: 7"x5"



B7. 花葉(4格)
Flower & Leaf (4's)



C1. 花葉(8格)
Flower & Leaf (8's)
Size: 10"x5"



C2. 草莓(10格)
Strawberry (10's)
Size: 9"x7"



C3. 玫瑰(8格)
Rose (8's)
Size: 10"x5"



C4. 巧克力(8格)
Chocolate (8's)
Size: 10"x5"



C5. 水果(8格)
Fruit (8's)
Size: 8"x4"



C7. 海洋生物(14格)
Sea-animal (14's)
Size: 10"x7"



C8. 英文字母(26格)
Alphabet (26's)
Size: 11"x6"



C9. 數學(15格)
Mathematics (15's)
Size: 11"x6"

迷你硬膠模

Mini Plastic Moulds

M279-21 set of 6 pcs

●全套六款硬膠模：曲奇、笑臉、星形、心形、草莓及薑餅人。

A full set of six hard plastic mold. cookies, smiley, star, heart-shaped, strawberry and the Gingerbread Man.



2.3cm-2.5cm(W)

5.5x3.5cm

日本專用模具

Japanese Mould

M273-31 each

●日本專用模具。

Size: 8 X12 X1cm(H)

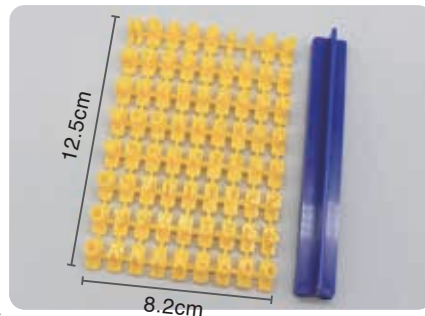


字母數字膠印

Alphabet/Number Stamp Set 72pcs

M268-11 set • 72pcs

●包含大楷英文字母及數字，共72粒。



12.5cm

8.2cm

重工用木輥

Wooden Rolling Pin

M199-11 each • 18" x ø1.5"

●18"長、直徑1.5"，表面光滑，純實木重身，把持力度適中，適合作泥板，搓薄片，多種用途。

This all-wood pins are scaled for heavy work. Ideal for controlling thickness when rolling out clay.



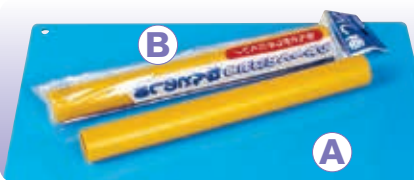
黏土墊板 / 圓棒

Claywork Mat/ PP Rolling Pin

M126-11 A • 320x250x2mm

M126-21 B • ø24.5 x 230mm

●均由日本原廠進口，高級樹脂製造，清潔容易，耐用硬膠，適合長期使用。Both are imported from Japan, high quality. Easy to clean.



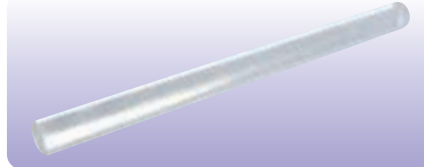
有機玻璃圓棒

Glass Rod

T350-11 each • 29.5cm x ø2.5cm

●29.5cm長、直徑2.5cm，表面光滑，有機玻璃製造，適合作泥板，搓薄片，多種用途。

This acrylic pins are scaled for heavy work. Ideal for controlling thickness when rolling out clay.



日本手藝光油80ml(油掃蓋)

Watersoluble Gloss Varnish 80ml with a cap brush

M128-21 80ml

●日本光油附油掃。適合紙黏土、紙、木材等工藝使用。水溶性、透明、快乾。
Suitable for paper clay, paper, wood etc.
Water soluble, transparent and fast drying.



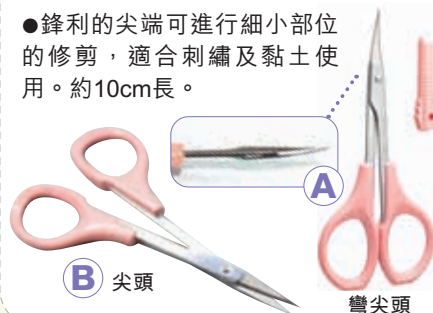
台灣剪刀

Cross Stitch Scissors

M288-11 A • curved sharp

M288-21 B • straight sharp

●鋒利的尖端可進行細小部位的修剪，適合刺繡及黏土使用。約10cm長。



日本雙頭雕塑刀

Japanese Dual Blade Knife

M277-11 each

●日本製雙頭雕塑刀，適合製作袖珍小物及各種黏土作品。

Double blade knife is used for cutting clay and creating lines and patterns with the two different stainless blades: sharp end and round one. Wooden handle provides a firm grip. Made in Japan. 167mm long. Tool for the artist, ceramist and hobbyist.



Safety blade for clay art.



Clay knife can be cut clay nice in straight. Two different stainless blades attached.

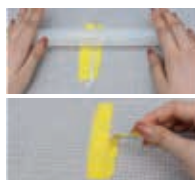


金屬蕾絲花邊壓模

Metal Lace Stamps

M299-11 set • 9 pcs

●一套9款，長約11.5cm，金屬花紋條，將花紋刀模壓在黏土上，然後用膠輥壓下，花邊就立即完成。



平價膠泥批

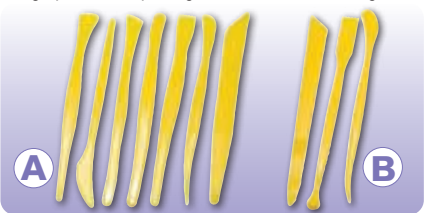
Budget Clay Tool Set

M123-21 A • 7 pcs

M123-22 B • 3 pcs

●每支塑膠泥批均有2個雕塑刀形，約16cm長，安全耐用，價格實惠。

Tough plastic sculpturing tools, makes modelling fun.



不鏽鋼雕塑工具

Stainless Steel Sculpting Tools Sets

M270-11 A • 3 pcs

M270-21 B • 6 pcs



透明玻璃膠

Transparent Silicone Sealant

T330-21 each • 10ml

●快乾、低氣味、少拉絲、高強度、易擠出、耐變黃、不下垂。適用於金屬、木材、皮革、陶瓷、橡膠、首飾、電器等。

Quick-drying, low odor, less wire drawing, high strength, easy to squeeze out, anti yellowing and non-sag. Suitable for metal, wood, leather, ceramics, rubber, jewelry, electrical appliances etc.



長頸鹿手掃光油

Giraffe Brushing Lacquer

M128-51 120ml

●為手掃施工而配製的快乾光油。快乾、氣味溫和，高光澤，不會滲透，耐溫性良好。

It is a fast drying lacquer which is specially designed for brushing application.

Short drying time, smellless. High gloss. Non-penetration. Excellent temperature change resistance.



噴裝光油

Clear Spray

M129-11 200g

●透明噴裝光油，用途廣泛，適用於室內或戶外的鐵器、木器製品，工業設備，家居裝飾，廣告製品等，用法方便簡。

Clear spray is so versatile, it can be used anywhere and everywhere on wood, metal, paper and other surfaces – indoor or outdoor. Application is quick and easy. Gloss finish.



蒙瑪特黏土光油

Mont Marte Gloss Clay Varnish

M128-71 bottle • 60ml

●光澤透明保護漆，防紫外線功能，抗黃效果理想，增加模型光澤效果。

Glossy transparent protective paint with UV protection function, effectively preventing the yellowing of varnish and increasing the gloss effect of the model.

