

9 陶藝 CERAMIC ART

Mayco FUNDAMENTALS®

Mayco Fundamentals Underglazes

D111-11 bottle • 1 pint

D111-21 12-Pint Class Pack

● Formulated to enhance performance characteristics for broader firing range, applicability to surface, and versatility in design. Use them with translucent gloss glazes, crystals, and stoneware glazes for beautiful glaze combinations. Apply to bisque or clay. Colors maintains their vibrancy from Cone 06 to Cone 10. Apply one coat for brush work and design and three coats for opacity. Cover with Mayco clear glaze to add gloss finish and make dinnerware safe.

Intermixable. Nontoxic and food safe when clear glazed.

For use on clay or greenware, apply underglazes, allow to dry and fire to cone 04. If desired, apply clear glaze and refire to cone 06-05 for earthenware and cone 05-10 for stoneware. For use on bisque, apply to cone 04 bisque, apply clear glaze if desired and refire earthenware to cone 06/05 and cone 5-10 for stoneware.

● 12-Pint Class Pack – China White, Bright Yellow, Orange, Fire Engine Red, Dragon Red, Regal Purple, Bright Blue, Kings Blue, Apple Green, Leaf green, Chocolate, and Jet Black



● UG-51 China White UG-222 Soft Yellow ● UG-46 Bright Yellow UG-203 Squash Yellow



UG-223 Apricot ● UG-204 Orange ● UG-206 Fire Engine Red ● UG-208 Dragon Red



UG-215 Blush UG-224 Rose UG-92 Lilac ● UG-87 Regal Purple UG-225 Plum UG-226 Lavender UG-93 Wild Violet UG-227 Concord Grape UG-3 Baby Blue



UG-72 Wedgewood Blue ● UG-97 Bright Blue ● UG-1 Kings Blue UG-82 Tucson Turquoise UG-219 Marine Blue UG-229 Aquamarine UG-230 Blue Grass UG-231 Lime Green ● UG-68 Apple Green



UG-233 Eucalyptus ● UG-21 Leaf Green UG-232 Olive UG-234 Ivory Pearl UG-235 Oatmeal UG-57 Spice Brown ● UG-31 Chocolate UG-236 Grey ● UG-50 Jet Black

Mayco Designer Liner

D113-11 each • 1.25 oz

● 1.25oz. bottles. Concentrated, clay-based pigments can be applied directly on clay, bisque, or over other glazes. Fires to a matte finish, although a clear or transparent glaze will give the liner a gloss finish. Will fire from Cone 05/06 to Cone 6. Comes in a squeeze bottle with a metal writer tip that is almost as accurate and precise as a ballpoint pen. A liner brush can also be used for application. Quick drying, Food safe, but may not suitable for dinnerware due to surface characteristics. Nontoxic.

DESIGNER LINER





**Stroke
& Coat®**

Stroke & Coat Glazes

D112-11 each • 8 oz

● Stroke & Coat is specially formulated for application on bisque or clay. Ready to use colors stay true from jar to finish. Colors are intermixable. Apply one coat for translucent effects, three coats for rich, opaque coverage. Perfect for controlled application over unfired glazes. All colors and glazes are non-toxic and dinnerware safe. Do not spray apply.

One fire Decorating and Glazing! Bisque Firing use Cone 04-03. Glazing Firing use Cone 06-Cone 6



Speckled Stroke & Coat Glazes

D112-41 each • 8 oz

● Mayco's Speckled Stroke & Coat Glazes are an enhanced version of the popular Stroke & Coat Wonderglazes. The addition of small specks of color to the base glaze provides visual depth and texture that does not melt or flow during the glaze firing. Fire to shelf Cone 06-05. Can be high fired up to shelf Cone 6 or higher. Dinnerware safe. Non-toxic.



Speckled Stroke & Coat® glazes provide a fun visual interest! Apply directly to wet or leatherhard clay bodies, such as terracotta.



Stroke & Coat Crystal Clear Brushing

D112-21 each • 1 pint • S2101P

D112-22 each • 1 Gallon • S2101G

Stroke & Coat Crystal Clear Dipping

D112-31 each • 1 Gallon • S2000G





Jungle Gems™ Crystal Glaze

D115-11 bottle • 4oz.

D115-21 6-4 oz. Class Pack 1

D115-22 6-4 oz. Class Pack 2

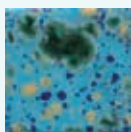
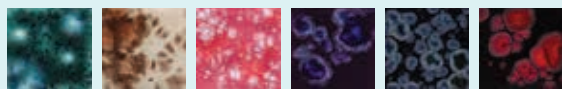
D115-23 6-4 oz. Class Pack 3

6-Pint Class Pack 1 – CG7564 Firecracker, CG7534 Sassy Orange, CG7184 Blue Caprice, CG7804 Mystic Jade, CG9584 Lagoon Blue and CG7984 Black Blue

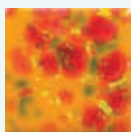
6-Pint Class Pack 2 – CG9744 Bloomin' Blue, CG7954 Yadro Print, CG9684 Peppermint Twist, CG7854 Royal Fantasy, CG7864 Obsidian, and CG7794 Black Opal

6-Pint Class Pack 3 – CG9584 Wildfire, CG9644 Kaleidoscope, CG7174 Pistachio, CG9624 Blue Azure, CG9694 Floral Fantasy, and CG9704 Masquerade

● Jungle Gems are non-toxic, and safe for artists of all ages – yet the unique characteristics and dramatic effects of these crystal glazes have been preserved. They demonstrate "the magic of the kiln", as their granules of contrasting glaze bloom into bursts of color and specks during firing. Can be high-fired, fire from cone 06 to cone 6 if more flow is desired. Not for use on food containers due to surface characteristics. Lead free. Do not spray apply. NOT DINNERWARE SAFE.



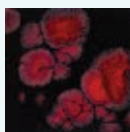
CG-718
Blue Caprice



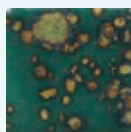
CG-753
Sassy Orange



CG-756
Firecracker



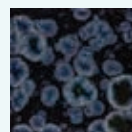
CG-779
Black Opal



CG-780
Mystic Jade



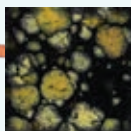
CG-785
Royal Fantasy



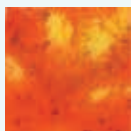
CG-786
Obsidian



CG-795
Yadro Print



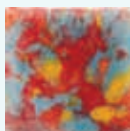
CG-798
Black Iris



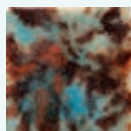
CG-954
Wildfire



CG-958
Lagoon Blue



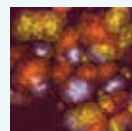
CG-964
Kaleidoscope



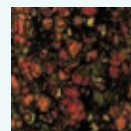
CG-965
Mocha Marble



CG-968
Peppermint Twist



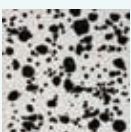
CG-969
Floral Fantasy



CG-970
Masquerade



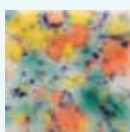
CG-974
Bloomin' Blue



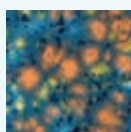
CG-977
Ink Spots



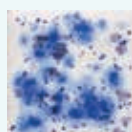
CG-998
Pink Pixie



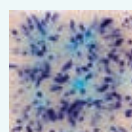
CG-981
Fruity Freckles



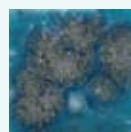
CG-983
Koi Pond



S-2701
Peacock Eyes



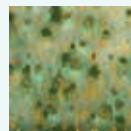
S-2702
Northern Lights



S-2711
Tahiti Grape



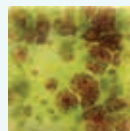
S-2712
Monsoon Seas



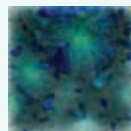
S-2714
Herb Garden



CG-713
Peacock Green



CG-717
Pistachio



CG-962
Blue Azure



S-2727
Poppy Fields

CONE
06/05
(998°C - 1031°C)
(1828°F - 1888°F)



NOT
Dinnerware Safe

Mayco Classic Crackles Glazes

D114-11 bottle • 4oz.

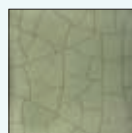
● Add a vintage or antiqued look to pottery. These glazes are designed to craze. Simply apply these coats to properly fired shelf Cone 04 bisque with a broad. Soft brush, then fire to shelf Cone 06. Food safe, but may not be suitable for food surfaces due to surface characteristics. Nontoxic.



CC101
Transparent Crackle



CC101
White Crackle



CC101
Green Tea



CC101
China Sea





Mayco® Foundations® Glazes

Perfect for layering and combinations. Easy to apply and dries quickly.
Fires to a smooth, level finish. Firing range 06/05. Nontoxic and dinnerware safe.
Available in gloss opaque, gloss translucent sheer and soft matte finishes.

CONE
06/05

(998°C - 1031°C)
(1828°F - 1888°F)



Foundations® OPAQUE

D116-11 pint

● Broad palette of colors that produce a beautiful, smooth high gloss finish and can be intermixed for custom colors.



Foundations® SHEER

D116-21 pint

● These translucent glazes add a tint of color to your work, showcasing surface textures and allowing design details to show through.



Foundations® MATTE

D116-31 pint

● Fires to a beautiful, soft subdued matte finish. Matte finish will increase in glossiness if fired higher than cone 06.



GENERAL USE:

Foundations® glazes were designed to mature at a shelf cone 06/05. Apply 2-3 coats, on cone 04 bisque, allowing surface to dry in-between coats. Foundations® dry quickly and speeds up your ability to handle or perform additional decorating. Foundations® Opaque and Sheers fire to high-gloss finishes, and therefore does not need to be clear glazed.

Foundations® have been formulated to mature at cone 06/05; however, most will maintain their color at higher temperatures.

輕鬆畫陶瓷 • 自在繪人生



輕鬆畫釉下彩

EZ Paint on Ceramics

C372-11 set • 10 colors

●陶瓷釉下彩是以各式金屬礦物煅燒所製成，顏料本身沒有使用鉛、鎘、汞等，無腐蝕性、無毒性。加水後即可彩繪噴飾，使用上潤滑度高、附著力強，燒成溫度950℃~1230℃，成色鮮豔穩定，不會因溫度的高低而改變或燒失，並可自由調色、混色。水溶性，如沾污衣物、器具，只需用清水擦拭沖洗即可除去。



亮白瓷碟

White Porcelain Plate

G138-31 A • each • Round Plate 5"(Dia.)

G138-32 B • each • Round Plate 8"(Dia.)

T240-41 C • each • Plastic Plate Holder 3"

●可自由繪畫著色，亮白易上色，另可創作水晶膠工藝乾花及相片擺件永久留念。

Suitable for glass painting and porcelain painting.



高溫素磚

Bisque Fired Ceramic Tiles

G137-11 each • 4" x 4"

G137-21 each • 6" x 6"

●本產品是以高壓鑄模再燒製的白素燒瓷磚，磚芯堅硬不變形，易於繪畫上色，嘗試以素磚為繪畫題材，色彩乾透後再用日本光油塗上表面保護，完成後畫面別緻耐用。Bisque tiles can be painted with many different kinds of paints. Tiles will not be deformed in High Fire when placed on flat surface. Use for glazes testing on the back of the tiles and for drawing on the surface.



亮白瓷杯

White Porcelain Mug

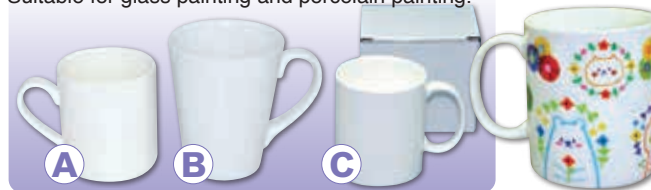
G138-22 A • each • 10cm(H)

G138-23 B • each • 12cm(H)

G138-24 C • each • 8cm x 9.5cm(H)

●A/B款杯身形狀，適合用來繪畫玻璃畫及瓷彩畫。C款白色咖啡杯骨瓷製，輕巧潔白，獨立紙盒包裝。

Suitable for glass painting and porcelain painting.



推坭墊板

Canva Cloth Board

TT047 each

●方便推拉陶泥，得心應手，尺寸為12"x12"。大量訂購，可自訂尺寸。適合學校使用。

Canvas Cloth snaps firmly over 12"x12" board.



實用收納箱

Storage Box

G121-11 each

●外形29x44x8cm(H)，盆內計26x41cm，能疊放省地方，適用陶藝及重型物件。



陶藝工具組

Pottery Tool Kit

TT046 set • #9808

●共有8款陶藝工具，非常實用。

Kit includes: Boxwood Potter's Rib, Boxwood Modeling Tool, Ribon Tool, Sponge, Needle Tool, Loop Tool, Metal Scraper, Wire Clay Cutter.



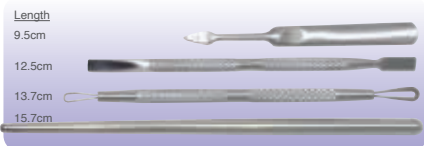
不鏽鋼捏塑工具

Stainless Steel Modelling Tools Set

T351-11 set • 4 pcs

●一套4支，以不鏽鋼製造。

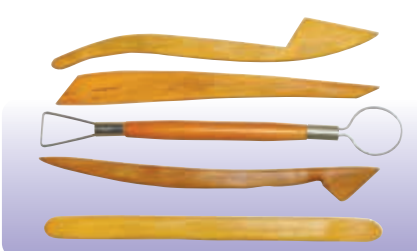
Sets of 4 durable stainless steel modelling tools.



紅木坭批工具

Royal-Art Modelling Tools Set

T371-11 set • 5 pcs



膠坭盆

Economic Plastic Basin #370

G118-11 ϕ 173mm x 7cm(H)

●塑膠平底盆，適合個人捏作，年幼學生容易控制場地整潔。



修坯工具 RIBBON TOOLS

海外貨品，存貨量有限，請早預訂

8 修坯刀

Ribbon Tools

TT008 6" • 6 pcs/set



9 修坯刀

Ribbon Tools

TT009 8" • 7 pcs/set



10 修坯刀

Flat Stainless Wire Ended Tools

TT010 8 3/4" • 7 pcs/set



11 修坯刀

Ribbon Tools

TT011-1 8" • 9 pcs/set



F.8 F.9 F.10 F.11 F.12 F.13 F.14 F.15 F.16

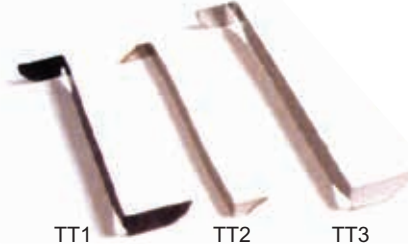
12 修坯刀

Turning Tools

TT012-1 TT1

TT012-2 TT2

TT012-3 TT3



TT1

TT2

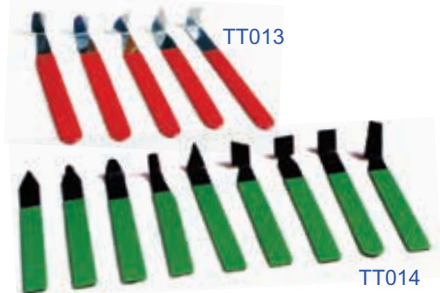
TT3

13,14 修坯刀

Turning Tools

TT013 5 pcs • set

TT014 9 pcs • set



TT013

TT014

Royal-Art 黏土工具套裝

Royal-Art Tools Set

T371-21 11 pcs • set



陶藝泥槍

Clay Gun

M122-21 large • set

● Medium sized hand held clay extruder supplied with 5 dies and 1 blanks. Clay can be loaded at either end of the barrel. Easy to disassemble for cleaning.



16x16mm

15mm

16mm dia.

5mm dia.x12

8x30mm

blank

日本黏土泥槍

Clay Gun

M122-11 small • set

● 19 embouts interchangeables.



48 雕塑木刀-1

Box Wood Modelling Tools - 1

TT048-1 8" • 19 pcs • set #1-19



48 雕塑木刀-2

Box Wood Modelling Tools - 2

TT048-2 8" • 19 pcs • set #20-38



鋼針

Needle Pin

TT001 each

● Approx. 15.5cm Long



雙頭工具組合

Sculpting Tools

TT002 7 pcs set



單頭鋼絲刀6"

Wire End Tool 6"

TT003 6 pcs set



雙頭鋼絲刀8"

Double Wire End Tools 8"

TT004 set



木片

Potters Ribs

TT005 10 pcs set



壺把

Teapot Handle

TT015 each



壺把

Teapot Handle

TT016 each



壺把

Teapot Handle

TT017-1 TH8

TT017-2 TH9



梨形刮刀

Ceramic Loop - Pear

TT006-1 each

● Approx. 14cm Long



木柄抹板

Throwing Sticks

TT018-1 DR8

TT018-2 DR6



木柄抹板

Throwing Sticks

TT019-1 TS8

TT019-2 TS5



木柄抹板

Throwing Sticks

TT020-1 DR1

TT020-2 DR3

TT020-3 DR4

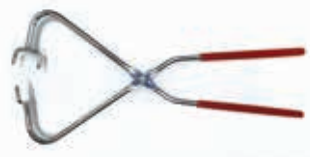


浸釉夾

Glaze Dipping Tongs

TT021 each

● Approx. 30cm Long



鋁測徑器

Aluminium Calipers

TT022 each

● Approx. 30cm Long



鋼絲線

Clay Cutter

TT023 2 pcs set



切土器

Wired Clay Slicer

TT024 each



馬蹄形金屬坭刮

Clay Cutting Strip

TT025 each

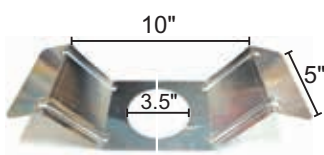
● Approx. 9x7cm



金屬起坯器

Metal Pot Lifts

TT026 2 pcs set



修坯刀8"

Turning Tools 8"

TT027 5 pcs set



橡膠片

Rubber Ribs

TT028 3 pcs set



專用燒製陶坭 POTTERY CLAY

美芯木節陶土

Pottery Clay

M249-11 10 kg

●燒至溫度970℃-1050℃，素燒後呈米白色，適合泥捏及拉坯使用，適用於大型雕塑及高要求之陶藝創作，價格相宜，適合教學使用，台灣出品。每包10公斤。

Fire from 970°C-1050°C. 10 kg carton package.

適合進階班及要求高水準作品之教材~



台灣天然陶坭

Pottery Clay (White)

適合初階班學習使用~

M119-31 10 kg

●陶坭加強黏性，不易乾裂，可拉坯及手捏，素燒後呈白色，容易上釉色，價格非常實惠，適合各種年齡使用。10公斤包裝(10公斤膠袋裝，原箱20公斤。)燒成溫度：1180℃-1230℃；含水量：22%-24% 10kg plastic bag package and 20 kg carton package.



紫砂坭

Red Porcelain

M295-11 500 g

●採用聞名全國的陶都-宜興紫砂泥，經科學調配，精心加工而成，無味、無毒、綠色環保。500g一包，燒成溫度1100℃-1200℃

This product is produced in the use of well-known Yixing purple clay. Processed with scientific deployment: dorless, non-toxic & green. 500g plastic bag package. Fire from 1100°C-1200°C.



陶坭 / 白瓷坭(磅裝)

Pottery Clay (1 lb.)

M119-11 A • 1 lb. • brown clay 陶坭

M119-21 B • 1 lb. • White clay 白瓷坭

●分為陶坭及白瓷坭兩種，磅裝方便分配。陶坭加強黏性，不易乾裂；白瓷坭比較柔軟，適合初學使用。

燒成溫度：900℃-1340℃；含水量：24%；收縮率：15% Choose from brown clay & white clay. 1 lb. plastic bag package.



英國陶坭

U.K. Pottery Clays

大量現貨供應！

M226-11 A • P1230 Semi Porcelain • 10 kg

M224-11 B • P1521 Throwing Earthenware • 10 kg

M223-11 C • P1331 Red Terracotta-Low Fire • 10 kg

M225-11 D • P1546 Rustic Stoneware • 10 kg

M222-21 E • P1260 Ivory Earthenware Clay • 10 kg

M226-21 F • P1221 Translucent Porcelain • 10 kg

●英國陶坭10公斤裝。

- A. 半瓷陶坭溫度燒至1160℃-1260℃ (Fire from 1160°C-1260°C.)
- B. 拉坯白坭溫度燒至1080℃-1180℃ (Fire from 1080°C-1180°C.)
- C. 低溫紅坭溫度燒至1020℃-1160℃ (Fire from 1020°C-1160°C.)
- D. 粗砂陶土溫度燒至1180℃-1280℃ (Fire from 1180°C-1280°C.)
- E. 象牙白坭溫度燒至1020℃-1160℃ (Fire from 1020°C-1160°C.)
- F. 透明瓷陶坭溫度燒至1240℃-1290℃ (Fire from 1240°C-1290°C.)



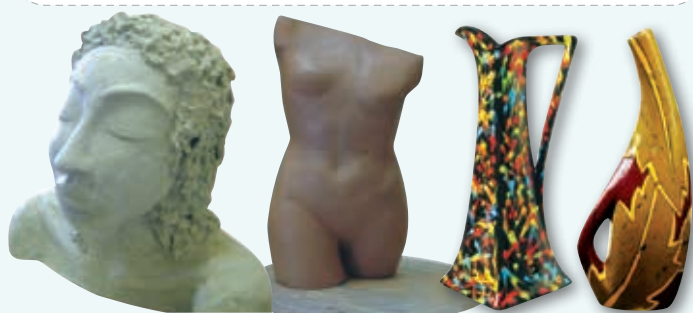
兒童電動拉坯機套裝

Pottery Wheel

M293-11 set

●手工陶藝的玩具，能提高小朋友的協調能力，體驗創作帶來的成就感。套裝內有拉坯機、陶土、各式切割及雕刻工具。需入電芯2枚。

This can exercise children's handmade ability and develop their art cultivation, improve their coordinated ability. Let them to find fun of DIY and a sense of achievement.



陶藝工具 POTTERY TOOLS

坭塑膠轉盤

Pottery Turntable - Plastic

M182-11 each

●全膠製造，清洗容易不會發霉，全台直徑11"，高1.5"，輕巧易用，適合初學者使用。

Plastic, easy to clean, dia.11", thickness1.5", suitable for beginners.



美芯轉盤

Meisum Turntables

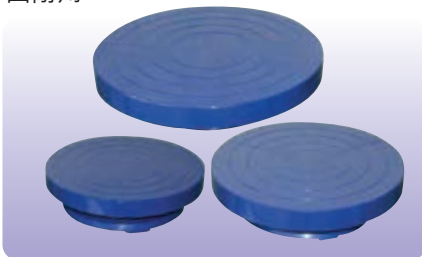
M297-30 Dia.30cm (4.5KG)

M297-26 Dia.26cm (4KG)

M297-23 Dia.23cm (3KG)

M297-19 Dia.19cm (2KG)

●四款尺寸可供選擇，精美焗漆，堅固耐用。



坭塑鋼轉盤

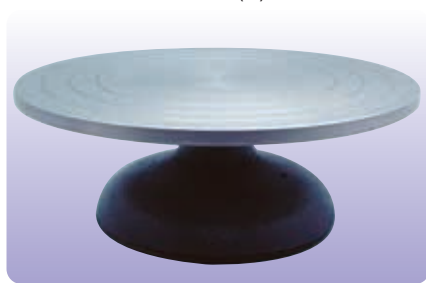
Pottery Turntable - Steel

M182-21 large

M182-22 small

●鋼板高身枱面，堅固耐用，適合重型泥塑工作。

Large Size: dia.30x10cm (H)
Small Size: dia.17x9cm (H)



拉坯機 POTTERY WHEEL

www.meisum.com



MS04 美芯電動拉坯機 MEISUM ELECTRIC WHEEL

台灣款式，國內組裝，220V，適合教學用途，經濟實惠。

Designed for student and hobbyist. Low noise and adjustable feet. A two pieces splash tray for easy cleaning after use.

Dimensions: 53L x 45W x 46H cm

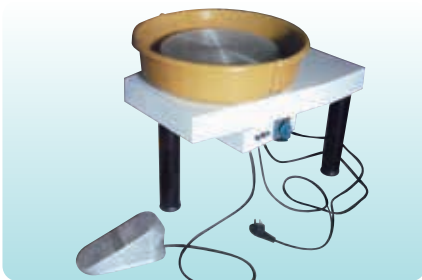
Shipping Weight: 40 kg

Current: 3.5 Amp, 220V

Motor: 1/3 HP reversible

Speed Range: 0-250 rpm

Wheelhead: Alloy dia.35cm



SQ-LP-6 美芯電動拉坯機 ELECTRIC WHEEL SQ-LP-6

220伏特，370瓦，無級變速，左、右運轉，0-300轉/每分鐘，鋁合金盤面直徑30cm，採用電子變速，運轉平穩，扭力大，附有靜音效果。調速靈敏，控制開關器採用進口產品，使用壽命可達一千萬次。

Dimensions: 60L x 47W x 46H cm

Shipping Weight: 42 kgs

Speed Range: 0 - 300 rpm.



SQ-LP-5 腳踏拉坯機 STANDING KICK WHEEL SQ-LP-5

轉盤左、右都可運轉，鋁合金盤面直徑30cm，不生鏽，機箱烤漆，操作盤設有下水孔，並配有下水管，便於清洗，四邊檔架不可拆卸。

Dimensions: 67L x 64W x 88H cm

Wheelhead diameter: 25.5cm(10")

Weight: 46 kgs

Clay capacity: 25kg



SQ-LP-8 枱面拉坯機 ELECTRIC DESKTOP WHEEL

充電一次可連續使用6-7小時。

Designed for student and hobbyist. Low noise and adjustable feet. A two pieces splash tray for easy cleaning after use.

Dimensions: 50L x 21W x 20H cm

Wheelhead diameter: 31.5cm

Voltage: 220Volt.

Power: 300Watt.

Weight: 9 kgs

Speed Range: 0-300 rpm



小型電窯 KILN

隨機附送耐熱板2塊(14.5cm x 19.5cm)，不需要特別安裝，輕巧易用，連接電源即可使用。

Comes with two heat-resistant plate (14.5cm x 19.5cm), and does not require special installation, lightweight, easy-to-use.

Temperature: 1300°C

Voltage: 220 Volt. **Power:** 1600Watt.

Heating Wire: Kanthal AF級 (左、右各6條)

Chamber: 15cm(W) x 20cm(D) x 15cm(H)

Outer Size: 30cm(W) x 45cm(D) x 35cm(H)

Net Weight: 16 kg



訂製金屬作品層架 TAILER-MADE METAL SHELVES

- 金屬框架，堅固耐用；
- 原木層板可拉出，配合需要自訂層數；
- 有鎖活動車輪；
- 適合風乾作品。
- 自訂尺寸，更能配合環境需要。請來電商議或來圖報價。
TEL: 2493 9200
FAX: 8343 4828
EMAIL: info@meisum.com

HEATWORKER Front Loading Kiln P5943/MP

Features:

Constructed in a steel shell. Fitted with captive key or electro mechanical interlocks to safely isolate the mains electricity before opening the kiln. High-grade elements for low cost firing. Fast firing capacity. Fitted with power-on, kiln-on warning lamps

Origin : U.K.

Model : P5943 / MP

Power Rating : 9 kW

Max. Temp. °C : 1320 °C

Firing Capacity : 180 litres (6.36 ft³)

Electrical Supply : 15amps 3 phase.

Controller Type : CERA-2 (2-program memory each with 3 segments).

Chamber Dimensions:

42cm W x 58cm D x 74cm H

External Dimensions :

73cm W x 104.2cm D x 165cm H

Weight : 315 kg



CERA-2

- 2 programs each with delay start, 3 heating/cooling ramps, soak, cut off and program pause.
- This is a straight forward controller for pottery firing where usually two programs are used, having three ramps allows for a warming or a cooling phase in the program.



Furniture Kit (P5843):

- 4 x P5485 BATTS 500 x 380mm
- 8 x P5518 PROPS 50mm
- 8 x P5519 PROPS 100mm
- 8 x P5521 PROPS 200mm
- 1 x P3380-01 BATT WASH (1Kg)



HEATWORKER Front Loading Kiln P5942/MP

Features:

Constructed in a steel shell. Fitted with captive key or electro mechanical interlocks to safely isolate the mains electricity before opening the kiln. High-grade elements for low cost firing. Fast firing capacity. Fitted with power-on, kiln-on warning lamps.

Origin : U.K.

Model : P5942 / MP

Power Rating : 7.5 kW

Max. Temp. °C : 1320 °C

Firing Capacity : 135 litres (4.77 ft³)

Electrical Supply : 15amps 3 phase.

Controller Type : CERA-2 (2-program memory each with 3 segments).

Chamber Dimensions: 42cm W x 48cm D x 68cm H

External Dimensions : 73cm W x 94cm D x 156cm H (include stand)

Weight : 270 kg



CERA-2

- 2 programs each with delay start, 3 heating/cooling ramps, soak, cut off and program pause.
- This is a straight forward controller for pottery firing where usually two programs are used, having three ramps allows for a warming or a cooling phase in the program.



Furniture Kit (P5842):

- 4 x P5484 BATTS 380 x 430 x 15mm
- 9 x P5518 PROPS 50mm
- 9 x P5519 PROPS 100mm
- 9 x P5520 PROPS 150mm
- 1 x P3380-01 BATT WASH (1Kg)



Iguana Cone 10 Kilns

Features:

- Front loading door
- Type-K thermocouple with 1/4" sheath
- Two tapered peep-holes in the left side
- 1/2" heavy steel door hinge rod with sealed bearings

Origin : U.S.A.

Voltage : 380 volts three phases

Watts : 10,800 Watts

Max. Temp. °F : 2350°F

Controller Type : Sentry 12-key 2.0 digital controller with temperature display and audible temperature alarm.

Chamber Dimensions: 18"W x 22.5"H x 18"D

External Dimensions : 36" x 31.5" x 60" H (include stand)

Cubic Feet : 118.93 litres (4.2 ft³)

Weight : 483 lb.



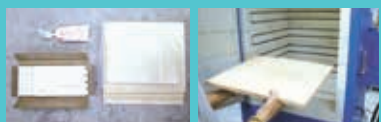
Sentry 12-key 2.0

- Temperature Display throughout firing and cooling in your choice of °C or °F.
- Stop/Back Key goes back one step with each keypress during programming. Use this feature to correct programming errors.
- Program Review lets you check that the program you are about to fire is correct.
- Audible Temperature Alarm to remind yourself to close a vented lid or to check the kiln near firing completion.
- Program Safety Lock for the program in active memory.



Iguana Furniture Kit:

- 3 x C-17 Full Shelves
- 1 x C-17H 1/2 Shelf
- 1" wide Square Posts
- 4 each of 1/2", 1", 2", 3", 4", 5", 6" lengths
- 1 lb. bag Kiln Wash



The digital automatic TnF-82-3 Paragon kiln

Features:

- Easy-access drop down switch box
- Heavy gauge stainless steel case
- A top row of 2" high blank wall bricks
- Coated lid, peepholes and rim of firebricks for extended firebrick life
- 2 wide-view tapered peepholes

Origin : U.S. A.

Model : TnF-82-3

Power Rating : 7.2 kW

Max. Temp.: 2350°F (1287°C)

Firing Capacity : 83.53 litres (2.95 ft³)

Electrical Supply : 30 amps 1 phase, 240 Volts

Controller Type : Sentry 12-key 2.0 Digital Controller

Chamber Dimensions: 41.9cm Dia. x 56.5cm D

External Dimensions : 64.8cm W x 95.3cm H x 71.9cm D

Weight : 103.42 kg



Sentry 12-key 2.0

- Temperature Display throughout firing and cooling in your choice of °C or °F.
- Stop/Back Key goes back one step with each keypress during programming. Use this feature to correct programming errors.
- Program Review lets you check that the program you are about to fire is correct.
- Audible Temperature Alarm to remind yourself to close a vented lid or to check the kiln near firing completion.
- Program Safety Lock for the program in active memory.



Furniture Kit (FSA82B3):

- 3 C-18 Shelves
- 1 C-18H 1/2 Shelf ;
- 1" wide Square Posts,
- 4 of each - 1/2", 1", 2", 3", 4", 5", 6" lengths ;
- 1 lb. Bag Kiln Wash



USEFUL TIPS & INFORMATION

PLACING YOUR KILN

Kiln shelves (batts) should be:

- The correct size for your kiln
- An appropriate thickness in relation to the temperature
- Supported evenly with sufficient gaps to allow air circulation
- Coated in batt wash for glaze firings

Ware should be placed:

- At least 5cm from the elements
- Without touching each other
- Evenly distributed in the kiln
- Remember to wipe the feet of glazed pieces or, for earthenware, use stilts
- Using cranks for glazed plates and tiles will save kiln space

FIRING CYCLES

The rate of temperature increase should be:

- Slow for a bisque firing (between 90 and 150°C per hour up to 650°C), depending on the size/thickness of the ware
- Slow up to 150 °C for a glaze firing
- Slow if the items have thick or varying cross section

陶藝室工程顧問

本公司提供工程顧問服務，協助學校建立陶藝室、電窯、拉坯機，設計及訂製木傢具，包括木櫃、儲物架、檯椅、乾燥棚等。歡迎來電洽商。

電話 : 2493 9200

傳真 : 8343 4828

電郵 : info@meisum.com

